



INSPECTION SUMMARY REPORT

Parent Edition | 2023-2024

LYCEE FRANCAIS INTERNATIONAL

FRENCH

OUTSTANDING

LYCEE FRANCAIS INTERNATIONAL FRENCH



Inspection Dates

29 - 02 February 2024

Principal

Sylvain Jaques Lunetta

LEARN MORE ABOUT THE SCHOOL

LEARN MORE ABOUT THE SCHOOL FEES

3014 Students



6 Emirati Students



246 Students of Determination



192 Teachers



10 Teaching Assistants



4 Guidance counsellors



OVERALL SCHOOL PERFORMANCE

OUTSTANDING

OUTSTANDING | Quality of performance substantially exceeds the expectation of the UAE

VERY GOOD | Quality of performance exceeds the expectation of the UAE

GOOD | Quality of performance meets the expectation of the UAE (This is the expected level for every school in the UAE)

ACCEPTABLE | Quality of performance meets the minimum level of quality required in the UAE

WEAK | Quality of performance is below the expectation of the UAE

VERY WEAK | Quality of performance is significantly below the expectation of the UAE

WHAT ARE THE SCHOOLS' HIGHLIGHTS AND POINTS TO IMPROVE?

SCHOOLS HIGHLIGHTS

- Senior leaders' vision to enhance student achievement within an inclusive learning community where diversity and well-being are valued
- The outstanding student achievement in French, English and mathematics
- Students' strong personal development, awareness of Islamic values and work ethic
- The outstanding curriculum and its adaptation to meet the needs of all students and the school's diligence in promoting students' healthy living
- The impact of governance and engagement of parents as partners in their children's education

POINTS TO IMPROVE

- Ensure assessment information is used skilfully and effectively to influence teaching and the curriculum, in order to identify and meet the learning needs of all groups of students
- Raise student achievement in Islamic Education and Arabic
- Design and implement a moderated teacher self-evaluation system based upon KHDA framework principles

WELLBEING

THE OVERALL JUDGEMENT OF WELLBEING IS **VERY GOOD**



The school is nurturing a positive ethos and culture, where the principles of well-being are integrated into daily interactions and contribute to the overall atmosphere. Each morning begins with music, setting a serene tone for the day. Leading this, the inclusion champion and well-being lead, alongside a dedicated team of managers and teachers, exemplify the promotion of well-being. This commitment is reflected in every interaction between adults and students, creating an environment where well-being is a lived experience.

STUDENTS' ACHIEVEMENTS

Students achieve significantly excellent outcomes across French, English, mathematics, and aspects of science. École Maternelle children, in particular, continue to make sustained and substantial progress in subjects and in their learning skills. Excellent student results are obtained in the Brevet in Collège and in the Baccalauréat in Lycée. Students have acquired a range of high-quality learning skills such as critical thinking and problem solving

ENGLISH

ATTAINMENT PROGRESS

MATERNELLE	OUTSTANDING	OUTSTANDING
PRIMAIRE	OUTSTANDING	OUTSTANDING
COLLEGE	OUTSTANDING	OUTSTANDING
LYCEE	OUTSTANDING	OUTSTANDING

MATHS

ATTAINMENT PROGRESS

MATERNELLE	OUTSTANDING	OUTSTANDING
PRIMAIRE	OUTSTANDING	OUTSTANDING
COLLEGE	OUTSTANDING	VERY GOOD
LYCEE	OUTSTANDING	OUTSTANDING

SCIENCE

ATTAINMENT PROGRESS

MATERNELLE	VERY GOOD	VERY GOOD
PRIMAIRE	VERY GOOD	OUTSTANDING
COLLEGE	VERY GOOD	VERY GOOD
LYCEE	OUTSTANDING	OUTSTANDING

ARABIC AS FIRST LANGUAGE

ATTAINMENT PROGRESS

MATERNELLE	NOT APPLICABLE	NOT APPLICABLE
PRIMAIRE	GOOD	GOOD
COLLEGE	GOOD	GOOD
LYCEE	GOOD	VERY GOOD

ARABIC AS SECOND LANGUAGE

ATTAINMENT PROGRESS

MATERNELLE	NOT APPLICABLE	NOT APPLICABLE
PRIMAIRE	ACCEPTABLE	GOOD
COLLEGE	GOOD	GOOD
LYCEE	NOT APPLICABLE	NOT APPLICABLE

ISLAMIC

ATTAINMENT PROGRESS

MATERNELLE	NOT APPLICABLE	NOT APPLICABLE
PRIMAIRE	GOOD	GOOD
COLLEGE	GOOD	GOOD
LYCEE	GOOD	GOOD

LEARNING SKILLS

MATERNELLE	OUTSTANDING
PRIMAIRE	VERY GOOD
COLLEGE	VERY GOOD
LYCEE	OUTSTANDING



STUDENTS' PERSONAL AND SOCIAL DEVELOPMENT



Students in all phases show positive attitudes towards their learning and are eager to cooperate, share ideas and enjoy working in groups. They understand the importance of healthy lifestyles and often choose nutritious foodstuffs from the canteen, and participate in a range of sporting events. Students are proactive and have a strong sense of community. They show initiative, manage their own projects, and take their leadership roles very seriously.

PERSONAL DEVELOPMENT

MATERNELLE OUTSTANDING

PRIMAIRE OUTSTANDING

COLLEGE OUTSTANDING

LYCEE OUTSTANDING

UNDERSTANDING OF ISLAMIC VALUES & AWARENESS OF EMIRATI & WORLD CULTURES

MATERNELLE OUTSTANDING

PRIMAIRE OUTSTANDING

COLLEGE OUTSTANDING

LYCEE OUTSTANDING

SOCIAL RESPONSIBILITY & INNOVATIVE SKILLS

MATERNELLE VERY GOOD

PRIMAIRE OUTSTANDING

COLLEGE OUTSTANDING

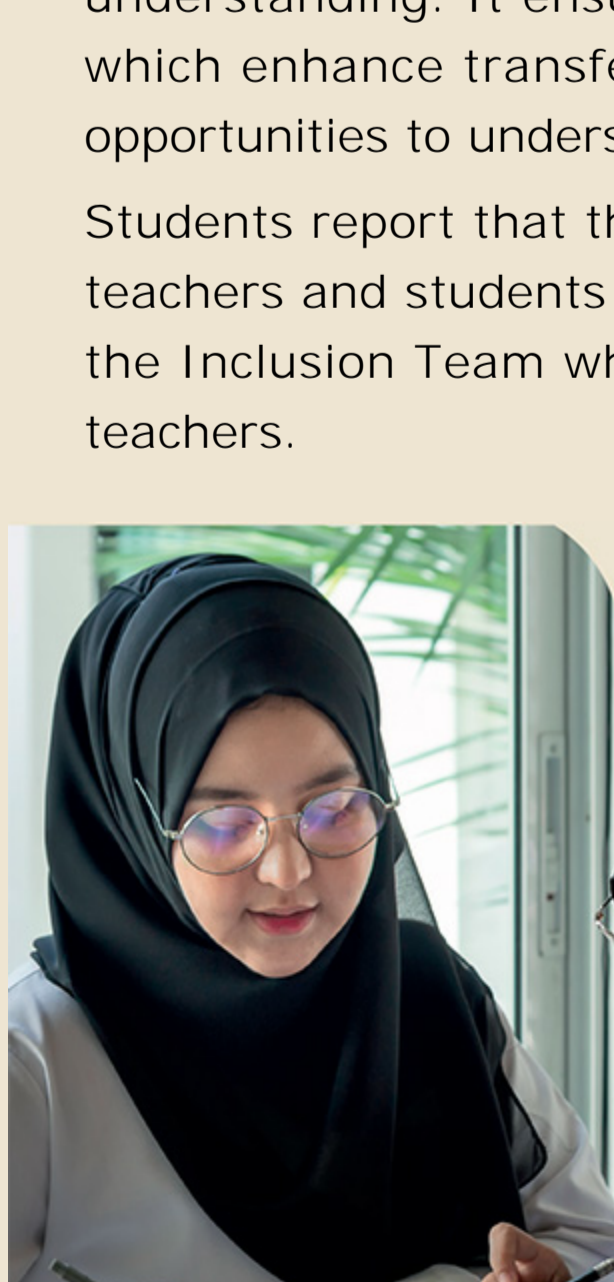
LYCEE OUTSTANDING

PROVISION FOR LEARNERS

Almost all teachers have excellent subject knowledge and make learning accessible and exciting. They use effective strategies to ensure active participation by students. In Primaire and Collège, a few are less knowledgeable about how students learn best. In Maternelle, a weekly overview provides personalised learning goals for children. Across all phases, effective assessment systems give leaders, at all levels, an accurate picture of each individual student's progress and attainment. The school benchmarks itself against other French National and International Schools through the French Government tests in Primaire, the Brevet in Collège and the Baccalauréat in Lycée.

The French curriculum has a clear rationale and is effective in developing a balance of skills, knowledge and understanding. It ensures progression in all subjects to meet the needs of students, with many cross-curricular links which enhance transfer of learning between different subjects. The curriculum is enriched by coherent and planned opportunities to understand and appreciate the UAE's rich culture.

Students report that they feel safe and secure in school. The school's policy regarding child protection is very clear and teachers and students are very well aware of it. Students of determination are supported by the inclusion Governor and the Inclusion Team which has been strengthened this year by the recent addition of two very well-qualified Inclusion teachers.



TEACHING

MATERNELLE OUTSTANDING

PRIMAIRE OUTSTANDING

COLLEGE VERY GOOD

LYCEE OUTSTANDING

ASSESSMENT

MATERNELLE VERY GOOD

PRIMAIRE VERY GOOD

COLLEGE VERY GOOD

LYCEE VERY GOOD

CURRICULUM DESIGN

MATERNELLE OUTSTANDING

PRIMAIRE OUTSTANDING

COLLEGE OUTSTANDING

LYCEE OUTSTANDING

CURRICULUM ADAPTATION

MATERNELLE OUTSTANDING

PRIMAIRE OUTSTANDING

COLLEGE OUTSTANDING

LYCEE OUTSTANDING

HEALTH & SAFETY

MATERNELLE OUTSTANDING

PRIMAIRE OUTSTANDING

COLLEGE OUTSTANDING

LYCEE OUTSTANDING

CARE & SUPPORT

MATERNELLE VERY GOOD

PRIMAIRE VERY GOOD

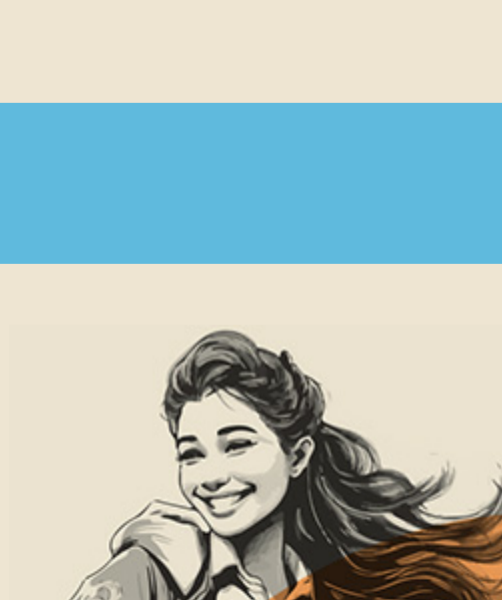
COLLEGE VERY GOOD

LYCEE VERY GOOD

INCLUSION

THE OVERALL PROVISION OF STUDENTS OF DETERMINATION IS **VERY GOOD**

Governors and leaders ensure an inclusive ethos where all students are welcome and valued. The inclusion team understands the range of barriers to learning and use assessments and tools to identify and plan interventions for students of determination. Progress is captured on 'ProNote' and enables provision to be modified and adapted to improve outcomes. Supportive classroom cultures are consistent across the school. Students of determination are mentioned in plans, but differentiation is not always apparent.



LEADERSHIP AND MANAGEMENT

A strong principal and a very capable senior leadership team have established a purposeful learning community and provided a caring environment which values inclusivity and well-being. The principal has sustained the trust of students, parents, and staff. Governors are having a significant impact upon student achievement whilst maintaining high morale in a growing school. Leaders have an extremely positive impact on the performance of the school and ensure that stakeholders have ample access to them to offer feedback.

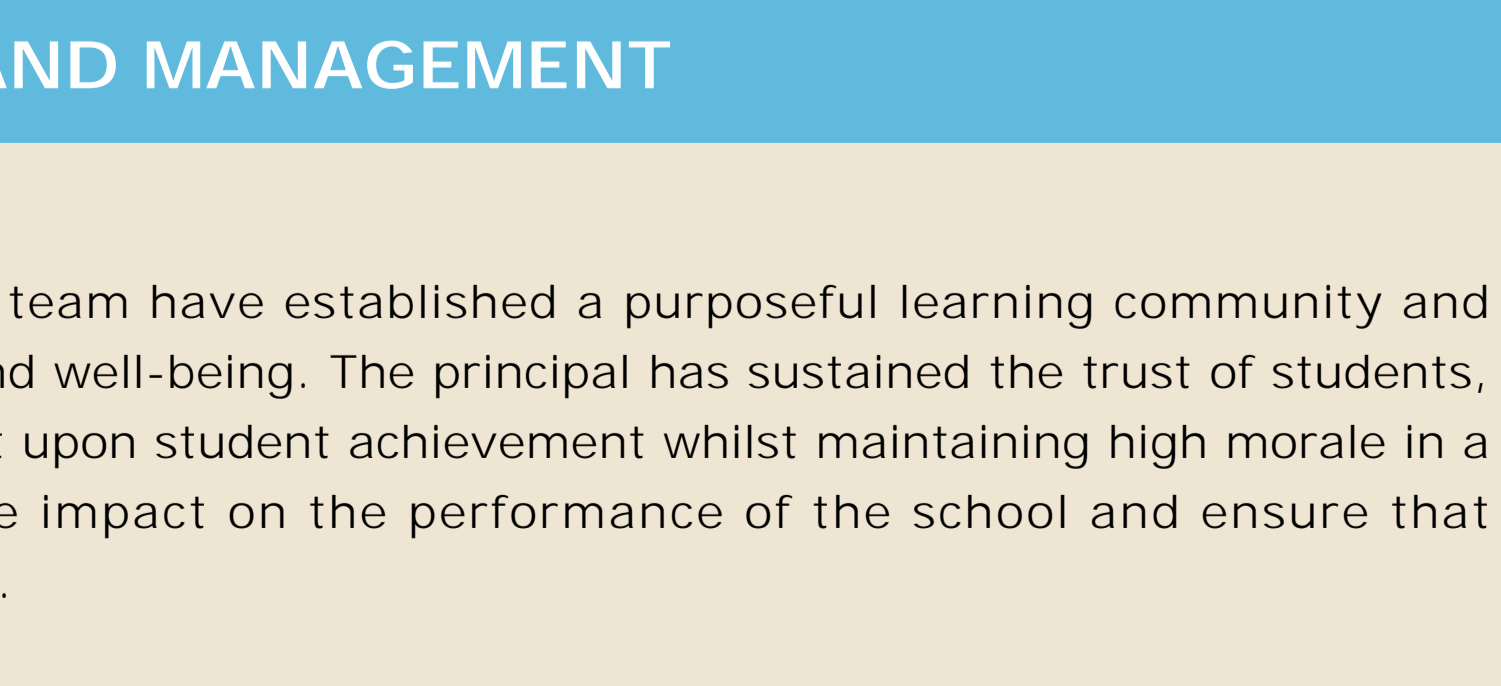
THE EFFECTIVENESS OF LEADERSHIP **OUTSTANDING**

SCHOOL SELF-EVALUATION AND IMPROVEMENT PLANNING **OUTSTANDING**

PARENTS AND THE COMMUNITY **OUTSTANDING**

GOVERNANCE **OUTSTANDING**

MANAGEMENT, STAFFING, FACILITIES AND RESOURCES **OUTSTANDING**



[CLICK HERE TO ACCESS THE FULL INSPECTION REPORT FOR THIS SCHOOL](#)